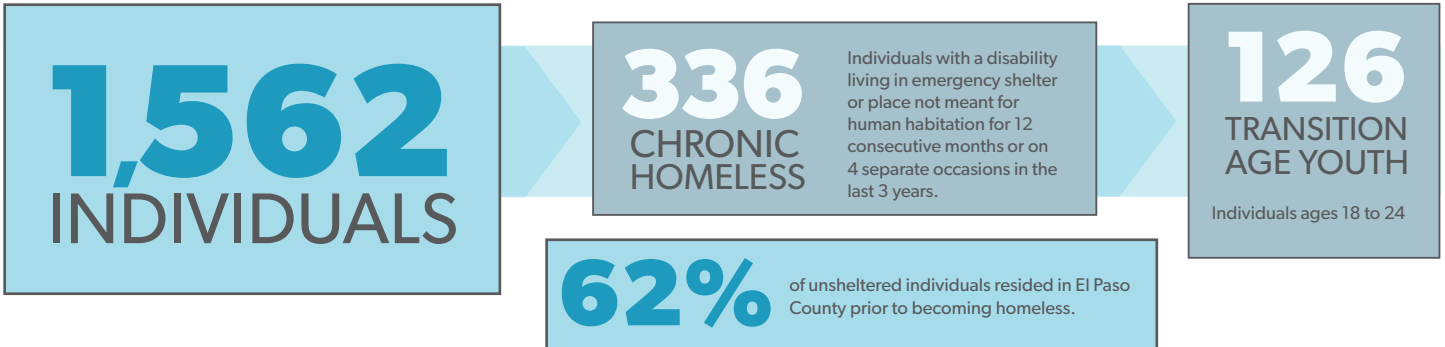




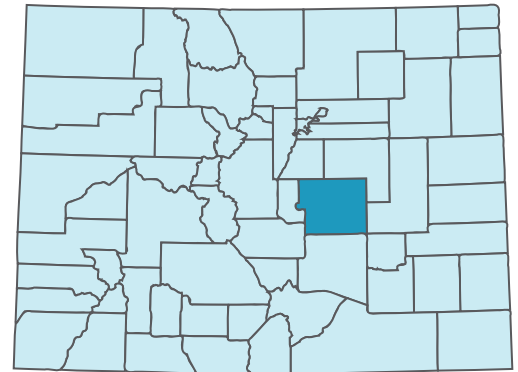
POINT IN TIME COUNT TOTALS



METHODOLOGY

The U.S. Department of Housing and Urban Development (HUD) requires that all Continuums of Care across the nation complete a biennial unsheltered count and an annual sheltered count of all individuals experiencing homelessness in the community on a single point in time during the last ten days of January.

The PPCoC 2019 Point In Time Count took place the night of Sunday, January 27, 2019. Emergency Shelters and Transitional Housing Programs collected client-level demographic information from individuals and families staying the night in each program. Unsheltered individuals were surveyed by volunteers, the week of January 28, about their housing status on the night of Sunday, January 27, 2018.



SHELTER INVENTORY & HOUSEHOLD STATUS

HOUSEHOLD STATUS

EMERGENCY SHELTER BED INVENTORY		HOUSEHOLD STATUS				
# OF BEDS IN 2019 809		POPULATION	DESCRIPTION	UNSHelterED (444)	SHELTERED (1,118)	TOTAL (1,562)
83% OCCUPANCY		Individuals	Individuals ages 18+	408	714	1,122
		Families	Households with at least one adult and one child	10 Families 35 persons in households: 18 Adults 17 Children	127 Families 400 persons in households: 139 Adults 261 Children	137 Families 435 persons in households: 157 Adults 278 Children
		Unaccompanied Youth	Minors (17 and younger without parent/guardian)	1	4	5
		Veterans	Individuals who served in US Armed Forces, National Guard or Reserves	75	126	201

TRANSITIONAL HOUSING BED INVENTORY	
# OF BEDS IN 2019 451	
97% OCCUPANCY	